



CEMENT BONDED PARTICLEBOARD  
CETRIS®

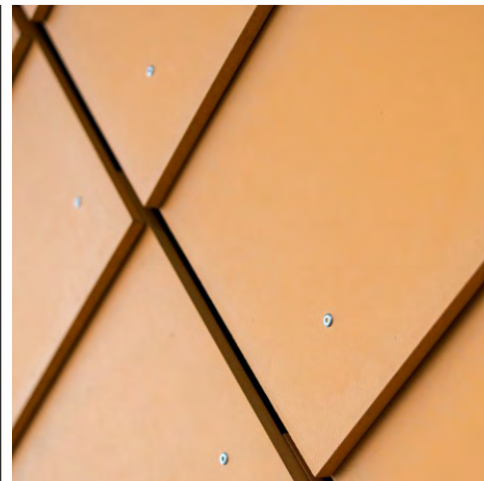
CIDEM Hranice, a.s., divize CETRIS  
Nová 223, 753 01 Hranice I - Město, Czech Republic

+420 724 301 191

cetrís@cetrís.cz

www.cetrís.cz

A4/IMG/EN/10000/11-2018



ISO 9001







# Using CETRIS® boards

Fire resistant applications



CETRIS BOARDS ARE NON-FLAMMABLE!



CETRIS® Boards in class A2



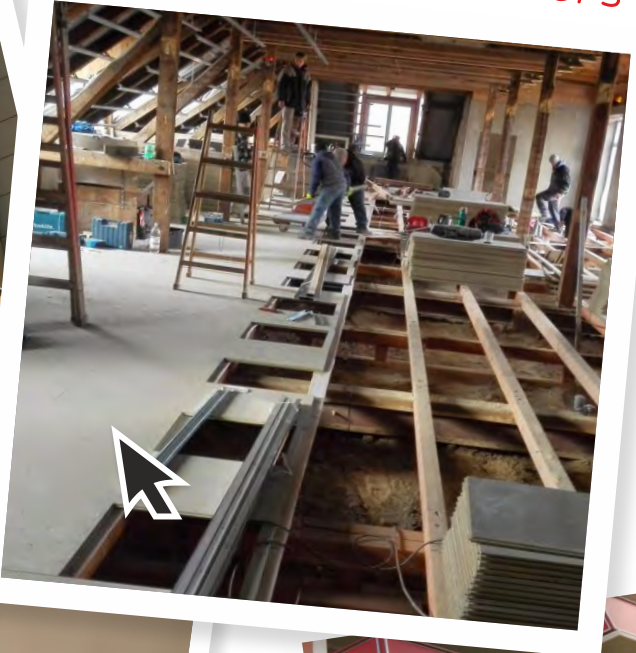
ISO 9001



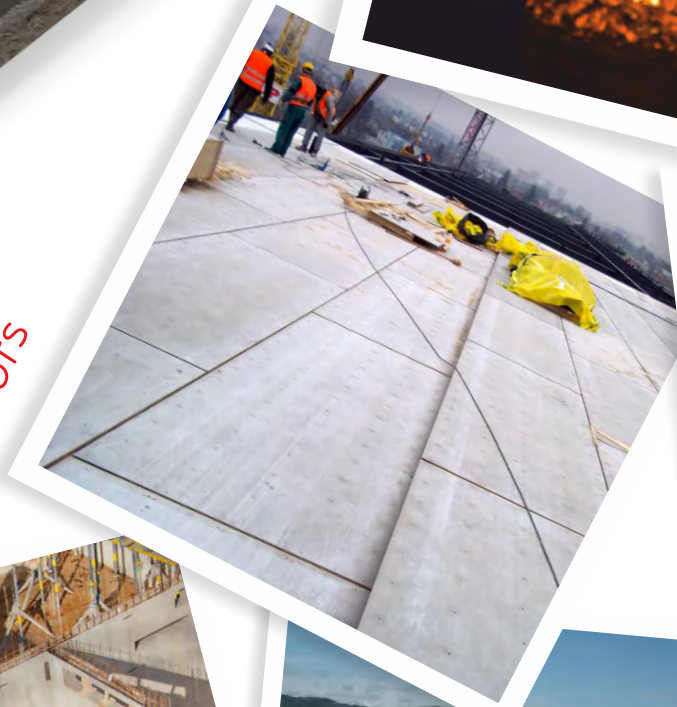
Facades



Floors



Roofs



Plinths



Balconies

Walls



Hobby

Road constructions



Permanent shuttering



Ceilings

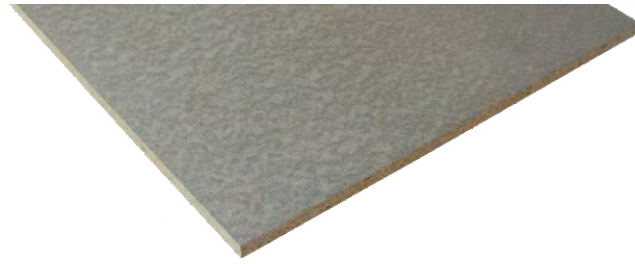


For more information, please visit our Web site [www.cetris.cz](http://www.cetris.cz) or ask for printed documents and DVD with detailed technical data.





## Boards without surface finish



### CETRIS® BASIC

is a cement bonded particleboard with smooth natural grey cement surface. It is produced in standard thicknesses of 8, 10, 12, 14, 16, 18, 20, 22, 24, 26, 28, 30, 32 mm. Upon prior agreement it is also possible to deliver the following thicknesses: 34, 36, 38 and 40 mm. The basic size of the board is 3,350 x 1,250 mm. We deliver the boards cut to the sizes specified by the customer, with rounded edge or chamfered edge under the 45° angle, milled starting from the 12-mm thickness with half-groove, starting from the 16-mm thickness with tongue and groove. The boards may also be delivered with pre-drilled holes.



### CETRIS® PD

is a cement bonded particleboard with tongue and groove connection system and smooth surface. The cement bonded particleboard of 1,250 x 625 mm (including the tongue) is designed for dry flooring technology. The following thicknesses are offered as standard: 16, 18, 20, 22, 24, 26, 28 mm. There is tongue and groove on the perimeter of the boards, and they are to be laid over beams or used in restoration of floors.



### CETRIS® PDB

is sanded cement bonded particleboard with tongue and groove connection system and smooth surface. Cement bonded particleboard calibrated by sanding with the size of 1250 x 625 mm (including the tongue) for dry floor technologies. The adjustment reduces thickness tolerance to +/- 0.3 mm. The following thicknesses are offered as standard: 16, 18, 20, 22, 24, 26, 28 mm (on the basis of agreement 30-32-34-36-38mm). There is a tongue and groove on the perimeter of the boards and they are to be laid over beams or used in restoration of floors.



### CETRIS® PDI

is a two-ply panel consisting of a cement bonded particleboard CETRIS® thickness 22 mm glued together with a fibre board insulation thickness 12 mm. The edges of the board are milled; they have tongue and groove features on the sides. The board surface is smooth. The cement bonded particleboard of 1,220 x 610 mm (including the tongue) is designed for dry flooring technology. Boards are supplied 34 mm thick. Boards have tongue and groove features on the sides and are designed for laying on an even, flat base (ceiling structure, floor joists). For detailed information about the floor board use see here.



### CETRIS® HOBBY Flowerbed curb

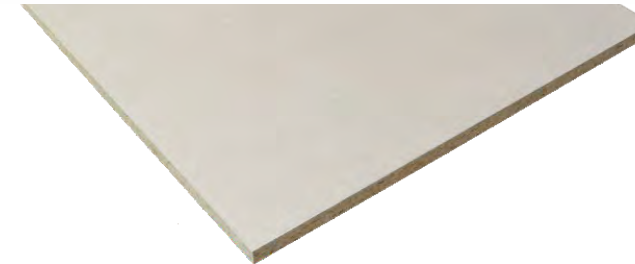
is a cement bonded particleboard CETRIS® of rectangular format and thickness 28 mm with the size of 1250 x 250 mm, cut from CETRIS® BASIC board. The top edge is provided with a double-edge, side edges are milled to allow joining (tongue+groove). Boards may be cut, drilled or milled. Boards may be set in concrete, or directly in a groove to be filled with soil later.



### CETRIS® PROFIL

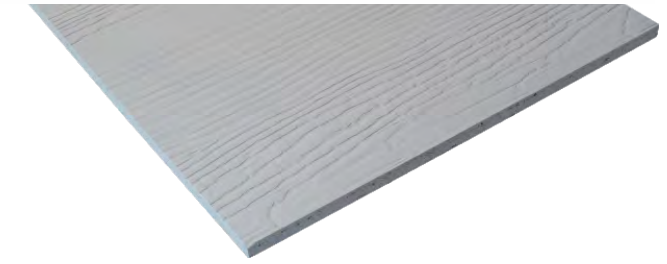
is a cement bonded particleboard with relief grey cement surface. Cement bonded particleboard of thickness 10 or 12 mm, with relief surface imitating wood or slate structure. The basic size of the board is 3,350 x 1,250 mm. The provided services are the same as in the case of CETRIS® BASIC. CETRIS® PROFIL boards are mainly used as exterior and interior facade cladding for their decorative appearance.

## Boards with surface finish



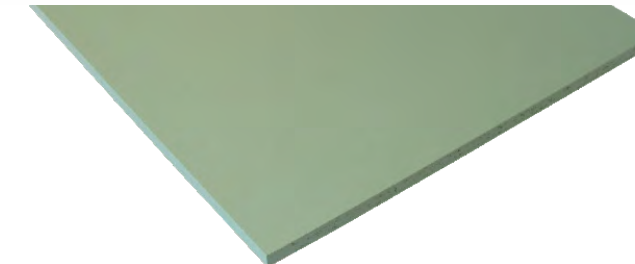
### CETRIS® PLUS

is a cement bonded particleboard with smooth surface, primed with a white primer. Cement bonded particleboards of thickness 8 - 32 mm with smooth surface. The primer is applied on both sides including edges. The back side primer is less covering with irregular texture. Basic board size is 3,350 x 1,250 mm. The provided services are the same as in the case of CETRIS® BASIC. The primer coat improves the bonding power between the board and the surface finish, reduces rate of absorption and consumption of the paint for final coat.



### CETRIS® PROFIL PLUS

is a cement bonded particleboard with relief surface, primed with a white primer. The thickness is 10 or 12 mm, with relief surface imitating wood or slate structure. The board is treated with white primer coat. The primer is applied on both sides including edges. The back side primer is less covering with irregular texture. The basic size of the board is 3,350 x 1,250 mm. The provided services are the same as in the case of CETRIS® BASIC. The primer coat improves the bonding power between the board and the surface finish, reduces rate of absorption and consumption of the paint for final coat.



### CETRIS® FINISH

is a cement bonded particleboard of thickness 10 - 16 mm with smooth surface provided with a primer and a final top coat in shades pursuant to colour tables RAL, NCS. The back side of CETRIS® FINISH cement bonded particleboards is provided with a protective primer with irregular texture and appearance and insufficient coverage. The colour shade of the coat is not specific, therefore the requirement for a white or transparent shade needs to be specified in the order in advance.



### CETRIS® PROFIL FINISH

is a cement bonded particleboard with relief surface provided with a primer and a final top coat. The thickness is 10 or 12 mm, with relief surface imitating wood or slate structure. The board is treated with a primer and a final colour in shades as per the colour tables RAL, NCS. Basic board size is 3 350 x 1 250 mm. The provided services are the same as in the case of CETRIS® BASIC. CETRIS® PROFIL FINISH boards are mainly used as exterior and interior facade cladding for their decorative appearance. The back side of boards is provided with a protective primer with irregular texture and appearance and insufficient coverage.



### CETRIS® LASUR

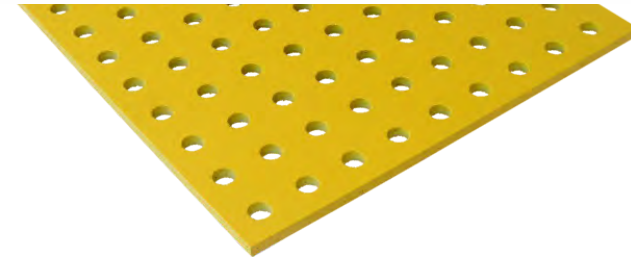
is a cement bonded particleboard of thickness 10 - 16 mm with smooth surface provided with a primer and a final acrylic varnish glazing in shades according to the colour tables. The glazing top coat provides a solid but non-uniform appearance. The basic size of the board is 3,350 x 1,250 mm. CETRIS® LASUR boards are mainly used as exterior facade cladding. The back side of CETRIS® LASUR cement bonded particleboards is provided with a protective primer with irregular texture and appearance and insufficient coverage.



### CETRIS® DEKOR

is a cement bonded particleboard of thickness 12 and 14 mm and size 1250 x 625 mm provided with acrylic decorative mosaic plaster. CETRIS® DEKOR boards are supplied in shades according to colour table for CETRIS® DEKOR boards. In the case of bigger orders other thicknesses and formats of CETRIS® DEKOR boards can be agreed individually. The boards are mainly used as exterior facade cladding, for vertical cladding of base mouldings, facades, railing fills and soffits (under roof ceiling).

## New and special products

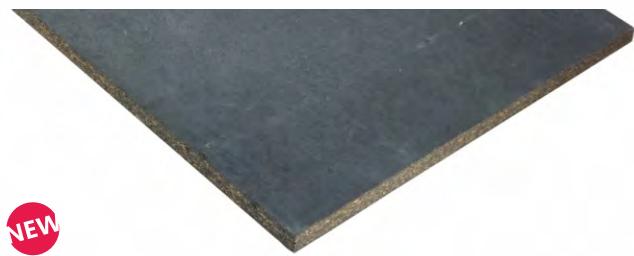


### CETRIS® AKUSTIC

is a cement bonded particleboard with predrilled/milled holes and smooth cement surface. Cement bonded particleboard CETRIS® AKUSTIC is a board made by processing (drilling regularly spaced holes) of the CETRIS® BASIC board type. In addition to the existing high mechanical parameters, such treatment improves the noise transmission properties. If the plain – basic board CETRIS® shows exceptionally high sound transmission loss, the drilled boards is an absorbent acoustic cladding element. In comparison to other acoustic cladding materials using of cement bonded particleboards CETRIS® AKUSTIC in addition assures resistance to mechanical breaking and to humidity – all with simultaneous high flame reaction class (A2 -s1,d0). These parameters predestine the new CETRIS® board type for use as absorbing acoustic cladding mainly to sports facilities, rooms with variable temperature and humidity and specific requirement buildings.

### CETRIS® AKUSTIC FINISH

is a board made by processing (with drilled/milled holes) of the basic board type CETRIS® BASIC. The basic dimension of the board is 1,250 x 625 mm with thickness of 8 and 10 mm. The surface is treated with a primer and a final top coat pursuant to colour tables RAL, NCS. In addition to the existing high mechanical parameters, introduction of the evenly spaced holes improves the noise transmission properties. CETRIS® AKUSTIC FINISH can be used as absorbing acoustic cladding mainly in sports facilities, rooms with variable temperature and humidity, and in buildings with special requirements.



### CETRIS® INCOL

is a cement bonded particleboard with smooth surface primed through with black pigment. Standard thickness 12 mm. Basic board size 3,350 x 1,250 mm. The boards are supplied cut to the size required by the customer, with rounded or 45° bevelled edge, milled with semi-groove, from board thickness. Pre-drilled holes may be made in the boards on request.

### CETRIS® AKUSTIC INCOL

is a cement bonded particleboard with smooth surface primed through with black pigment with drilled/milled holes. Standard thickness 12 mm. Basic board size 1,250x625 mm. CETRIS® AKUSTIC INCOL boards re used as part of noise-absorbing acoustic insulation structures in connection with load-bearing structures, mineral wool and acoustic textile.



### CETRIS® PROFIL LASUR

is a cement-bonded particleboard with relief imitating wood or slate structure, with a primer and a final varnish glazing. The varnish-glazed surface does not create unified and compact surface. Basic board size 3,350 x 1,250 mm. The provided services are identical with those provided for CETRIS® PROFIL boards. CETRIS® PROFIL LASUR boards re mainly used as exterior facade cladding. The underside of the CETRIS® PROFIL LASUR cement-boded particleboards is provided with a protective primer with irregular structure, raw appearance and insufficient coverage. The paint in provided in unspecified colour shade, the requirement for white or transparent shade must be specified in the order in advance.

## Advantages of CETRIS® boards



### Environment friendly

CETRIS® cement bonded particleboards are ecological and environment friendly. They contain no hazardous substances such as asbestos and formaldehyde and they are resistant to petrol and oils.



### Frost-resistant

CETRIS® cement bonded particleboards are frost resistant, tested successfully by 100 freezing-defrosting cycles pursuant to ČSN EN 1328 standard.



### Fire resistant

CETRIS® cement bonded particleboards are fire resistant and their classification according to fire reaction pursuant to the European standard EN 13 501-1 is A2-s1, d0–non-flammable.



### Hygienic harmless

CETRIS® boards are hygienic harmless, odourless and contain no hazardous substances.



### Perfect sound barrier

CETRIS® boards provide for acoustic insulation (sound transmission loss 30 – 35 dB).



### Fungi and mould resistant

Moulds are not formed on the board surface thanks to the fact that CETRIS® board is resistant to humidity.



### Weather resistant

CETRIS® cement bonded particleboard is the best material for wet rooms and weather-exposed exteriors for its excellent humidity resistance.







### Insect resistant

CETRIS® cement bonded particleboards are absolutely insect resistant thanks to their cement content.

## CETRIS® Board Composition



	63%	Wood
	25%	Cement
	10%	Water
	2%	Hydration additives



Join us on Facebook. You not only get professional news, but also exclusive reference photographs and the option to contact us directly with any query.



Visit our channel on the YouTube portal with many interesting presentations and assembly videos. You will find the links on our new website [www.cetris.cz](http://www.cetris.cz).